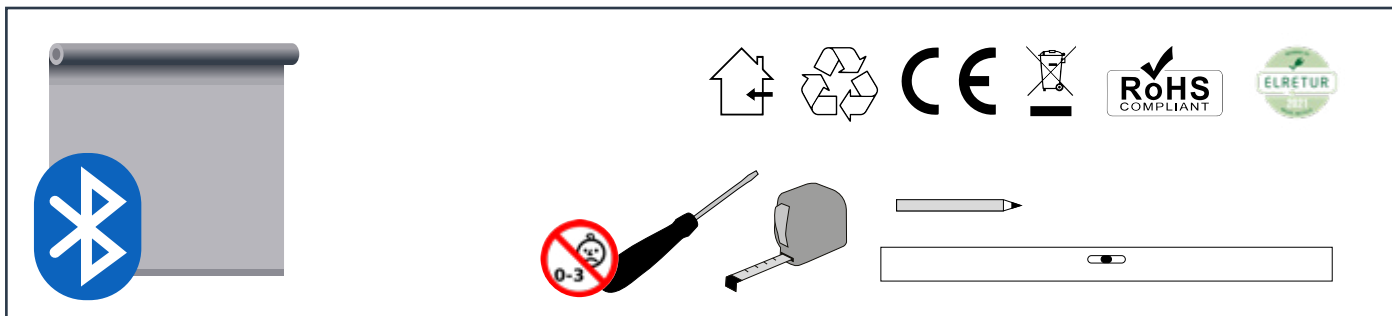
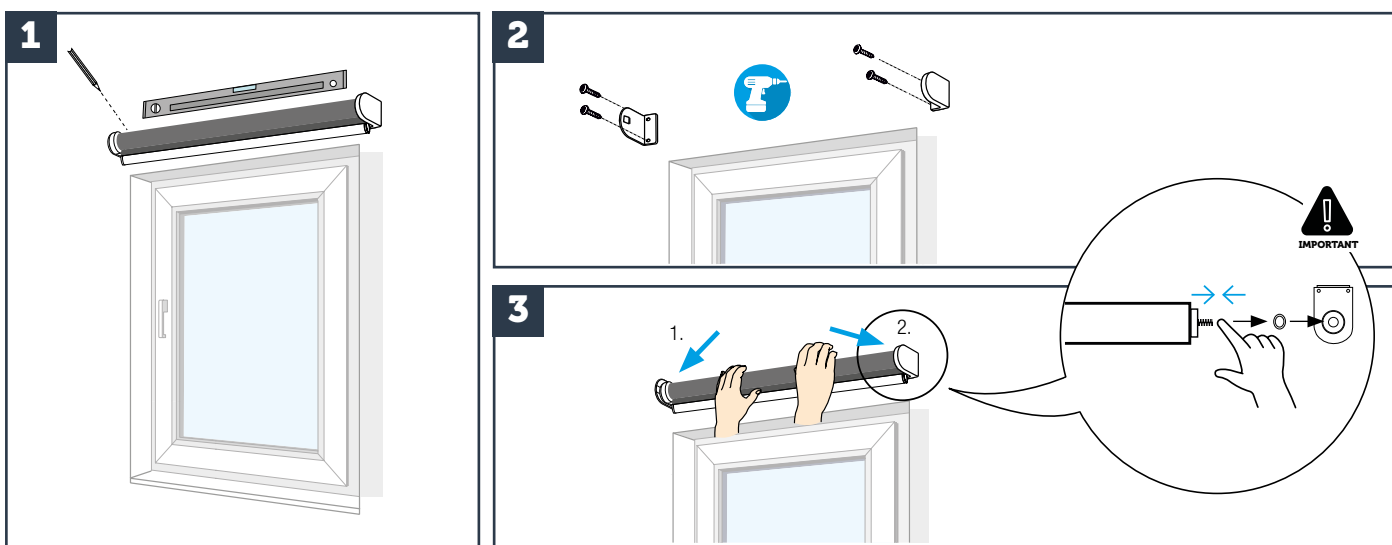


MONTAGEVEJLEDNING: POWER-MOVE RULLEGARDIN

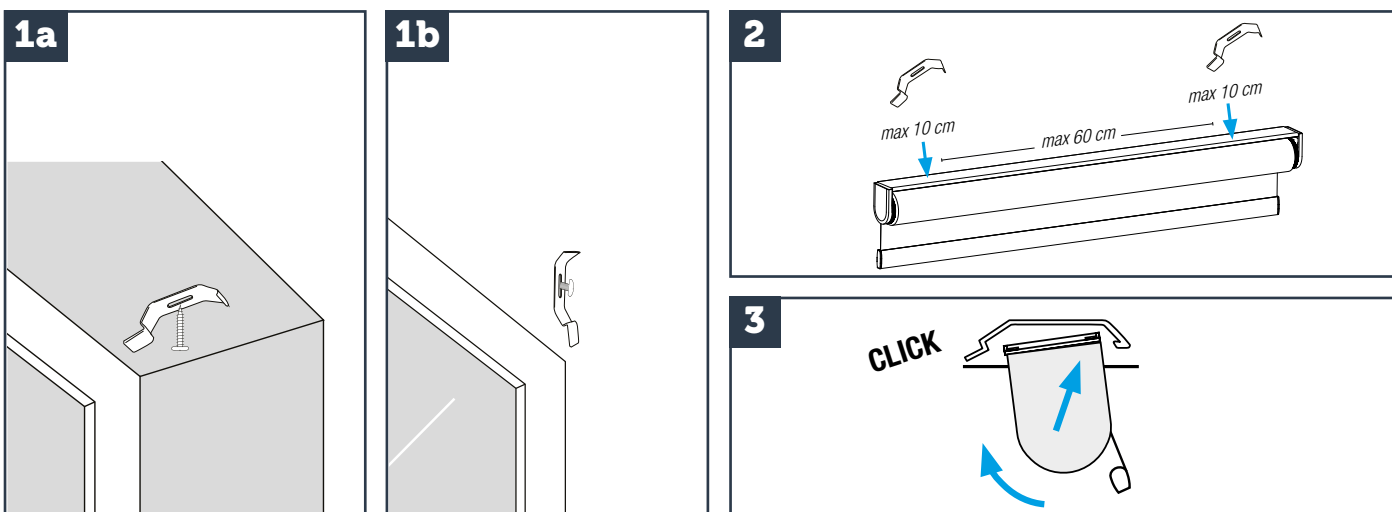
INSTALLATION MANUAL: POWER-MOVE ROLLER BLIND



Montering med beslag - til loft/niche- eller vægmontering
Installation with brackets - for ceiling/niche or wall mounting



Montering med monteringsbar - til loft/niche- (A) eller vægmontering (B)
Installation with mounting bar - for ceiling/niche (A) or wall mounting (B)



Skann QR koden eller besøg kirsch.dk/kollektion/motoriserede-gardiner for ofte stillede spørgsmål, tekniske specifikationer og programmering af motor.

For FAQ, technical specifications and programming of your electric blind scan the QR code or visit kirsch.dk/kollektion/motoriserede-gardiner.